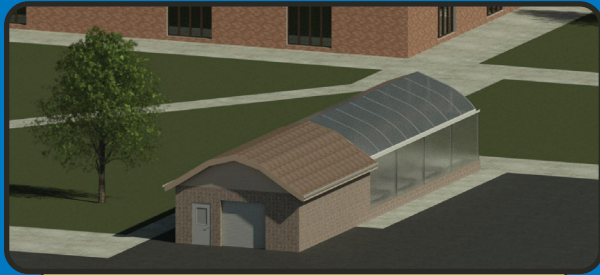


# ABOUT THE GREENHOUSE

The greenhouse will be equipped to support TCSC agricultural studies and a strong FFA program which currently involves over 215 students at the middle and high school. The greenhouse will be used by FFA students to grow flowers, plants and vegetables through soil growth and hydroponics. Money raised will enable students to attend field trips and conventions and participate in a wide variety of other academic activities. This much anticipated amenity will also be utilized as a shared resource for unlimited opportunities for community involvement and impact opportunities.



- 22' X 48' GREENHOUSE
- STORAGE/PREP BUILDING AT END
- FULLY AUTOMATED ENVIRONMENT
- STUDENT POWERED
- OPEN YEAR ROUND
- SELF-SUSTAINING RESOURCE
- FLOWERS, PLANTS, AND PRODUCE VEGETABLES

*Experiential learning in a natural environment is one of the most positive and impactful activities for student learning with a lasting impact.*

**Rik Stillson, THS Principal**

*Our new greenhouse will serve as a year-round classroom providing virtually limitless teaching and learning opportunities,*

**Dr. Ryan Glaze, TCSC Superintendent**



**1051 S. MAIN STREET  
TIPTON, INDIANA 46072**

# GROW with Us!

## TCSC GREENHOUSE INITIATIVE

*The learning experiences in this greenhouse will provide an introduction to the many crop and plant-based careers available within a driving distance of Tipton. It is our hope that this is just the beginning of synergies that will occur between local employers and their next generation of talented employees!*

**Jeff Rodibaugh**

*President Friends of Tipton FFA, Inc.*





# FUNDRAISING GOAL

The total projected construction and development budget is **\$300,000** and projected construction completion of **August 2021**.  
(Breakdown of specific costs is available upon request)

## PARTNERSHIP OPPORTUNITIES

To make this greenhouse project a reality to its greatest potential, we need the financial support from all vested partners throughout the community from the multigenerational farm families to the local agricultural businesses to the national seed corporations. Donations are currently being accepted to support the construction of the greenhouse.

## FUNDRAISING ORGANIZATION

The donations are being collected and disbursed from the **FRIENDS OF TIPTON FFA, INC.** which was created in 2018 to support the immediate needs and programming efforts of the TMS FFA and provide greater support for the existing agricultural program at Tipton Community High School. This 501(c)3 not-for-profit organization is a "Booster Club" of parents and community members created to be a fundraising vehicle and recruitment mechanism for volunteers and relevant experts.

## PARTNERSHIP RECOGNITION AT ALL LEVELS OF COMMITMENT

### GREENHOUSE BUILDING "NAMING RIGHTS"

\$50,000 Donation and \$25,000 commitment over a five-year period will solidify your organization and/or family as the major contributor and leader of this pivotal step in TCSC Ag Education. Your name will be prominently displayed in the construction of the building for school visitors to recognize year around as well as when referring to the greenhouse building in all communications.

### GREENHOUSE BUILDING LEGACY PARTNERS

\$25,000 commitment over a five-year period will allow your company logo to be displayed on the outside of the storage building for all to see over the five-year period.

### LARGE COMMEMORATIVE PLAQUE PERMANENT RECOGNITION for Following Donors

*Font sizes increasing with the  
corresponding size of the donation*

**RIPENING LEVEL** \$10,000 donation makes our fruit and flowers reach maturity.

**FLOWERING LEVEL** \$5,000 donation helps us develop the healthy flowers and fruit.

**BUDDING LEVEL** \$1,000 donation gives us what we need to start our blooming stage.

**VEGETATIVE LEVEL** \$500 donation gives us the energy to grow our stems and foliage.

## PROGRAM RECOGNITION

**SEEDLING LEVEL** \$200 donation helps our roots develop and spread- Seedling level donors get name included on Tipton FFA website and all FFA programs throughout the 2021-2022 school year.

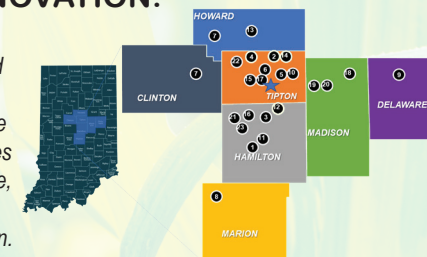
**SPROUT LEVEL** \$100 donation germinates and grows our leaves-Sprout level donors get name included on Tipton FFA website and programs throughout the 2021-2022 school year.

Donations will be  
collected and  
managed by

**FRIENDS OF TIPTON FFA, INC.**  
2665 E 100 S, Tipton, IN 46072

## TIPTON IS EPICENTER OF SEED AND PLANT INNOVATION!

Tipton County is home to 9 plant and seed companies with another 8 in the surrounding counties of Clinton, Delaware, Hamilton, Howard, Madison and Marion.



- |                      |                       |                     |
|----------------------|-----------------------|---------------------|
| #1 AGRELIANT GEN     | #9 G AND G PEPPERS    | #17 PIONEER/CORTEVA |
| #2 BAYER             | #10 HARTLEY GRAIN     | #18 POET            |
| #3 BECK'S HYBRIDS    | #11 HEARTLAND GROWERS | #19/20 RED GOLD     |
| #4 BECK'S FOUNDATION | #12 HELENA            | #21 STINE SEED      |
| #5 CARGILL           | #13 KOKOMO GRAIN      | #22 TOTAL SEED PRO  |
| #6/7 CO-ALLIANCE     | #14 LEGG SEEDS        | #23 WAITT GRAIN     |
| #8 CORTEVA           | #15/16 NUTRIEN AG SOL |                     |

